

## Test Report

No. SH9035303-1/CHEM

Date: Apr. 10, 2009

Page 1 of 4

JIANGSU HUAXIN PLASTIC INDUSTRY DEVELOPING CO.,LTD  
NO.189 DAQIAO EAST ROAD XINYI CITY JIANGSU CHINA

THIS REPORT IS TO SUPERSEDE TEST REPORT NO.SH9035303/CHEM DATE: 2009/03/13

The following sample(s) was/were submitted and identified by/on behalf of the client as:

Sample Name : PETG SHEET  
SGS Ref No. : 11743168-5

Sample Receiving Date : Mar.09, 2009  
Testing Period : Mar.09– 13, 2009

Test Requested : In accordance with the RoHS Directive 2002/95/EC, and its amendment directives.

Test Method : With reference to IEC 62321:2008  
(1) Determination of Cadmium by ICP.  
(2) Determination of Lead by ICP.  
(3) Determination of Mercury by ICP.  
(4) Determination of Hexavalent Chromium by Colorimetric Method.  
(5) Determination of PBBs and PBDEs by GC/MS.

Test Results : Please refer to next pages

Conclusion : Based on the performed tests on submitted samples, the results comply with the RoHS Directive 2002/95/EC and its subsequent amendments.

Signed for and on behalf of  
SGS-CSTC Chemical Laboratory



Sandy Hao  
Lab Manager

This document is issued by the Company under its General Conditions of Service printed overleaf or available on request and accessible at [http://www.sgs.com/terms\\_and\\_conditions.htm](http://www.sgs.com/terms_and_conditions.htm). Attention is drawn to the limitation of liability, indemnification and jurisdiction issues defined therein. Any holder of this document is advised that information contained hereon reflects the Company's findings at the time of its intervention only and within the limits of Client's instructions, if any. The Company's sole responsibility is to its Client and this document does not exonerate parties to a transaction from exercising all their rights and obligations under the transaction documents. Any unauthorized alteration, forgery or falsification of the content or appearance of this document is unlawful and offenders may be prosecuted to the fullest extent of the law. Unless otherwise stated the results shown in this test report refer only to the sample(s) tested. This document cannot be reproduced except in full, without prior approval of the Company.

Test results by chemical method (Unit: mg/kg)

Test Item(s):	Method (refer to)	1	MDL	RoHS Limit
Cadmium(Cd)	(1)	ND	2	100
Lead (Pb)	(2)	ND	2	1000
Mercury (Hg)	(3)	ND	2	1000
Hexavalent Chromium (CrVI) by alkaline extraction	(4)	ND	2	1000
Sum of PBBs	(5)	ND	-	1000
Monobromobiphenyl		ND	5	-
Dibromobiphenyl		ND	5	-
Tribromobiphenyl		ND	5	-
Tetrabromobiphenyl		ND	5	-
Pentabromobiphenyl		ND	5	-
Hexabromobiphenyl		ND	5	-
Heptabromobiphenyl		ND	5	-
Octabromobiphenyl		ND	5	-
Nonabromobiphenyl		ND	5	-
Decabromobiphenyl		ND	5	-
Sum of PBDEs		ND	-	1000
Monobromodiphenyl ether		ND	5	-
Dibromodiphenyl ether		ND	5	-
Tribromodiphenyl ether		ND	5	-
Tetrabromodiphenyl ether		ND	5	-
Pentabromodiphenyl ether		ND	5	-
Hexabromodiphenyl ether		ND	5	-
Heptabromodiphenyl ether		ND	5	-
Octabromodiphenyl ether		ND	5	-
Nonabromodiphenyl ether	ND	5	-	
Decabromodiphenyl ether ##	ND	5	-	

**Test Part Description:**

1. White plastic board

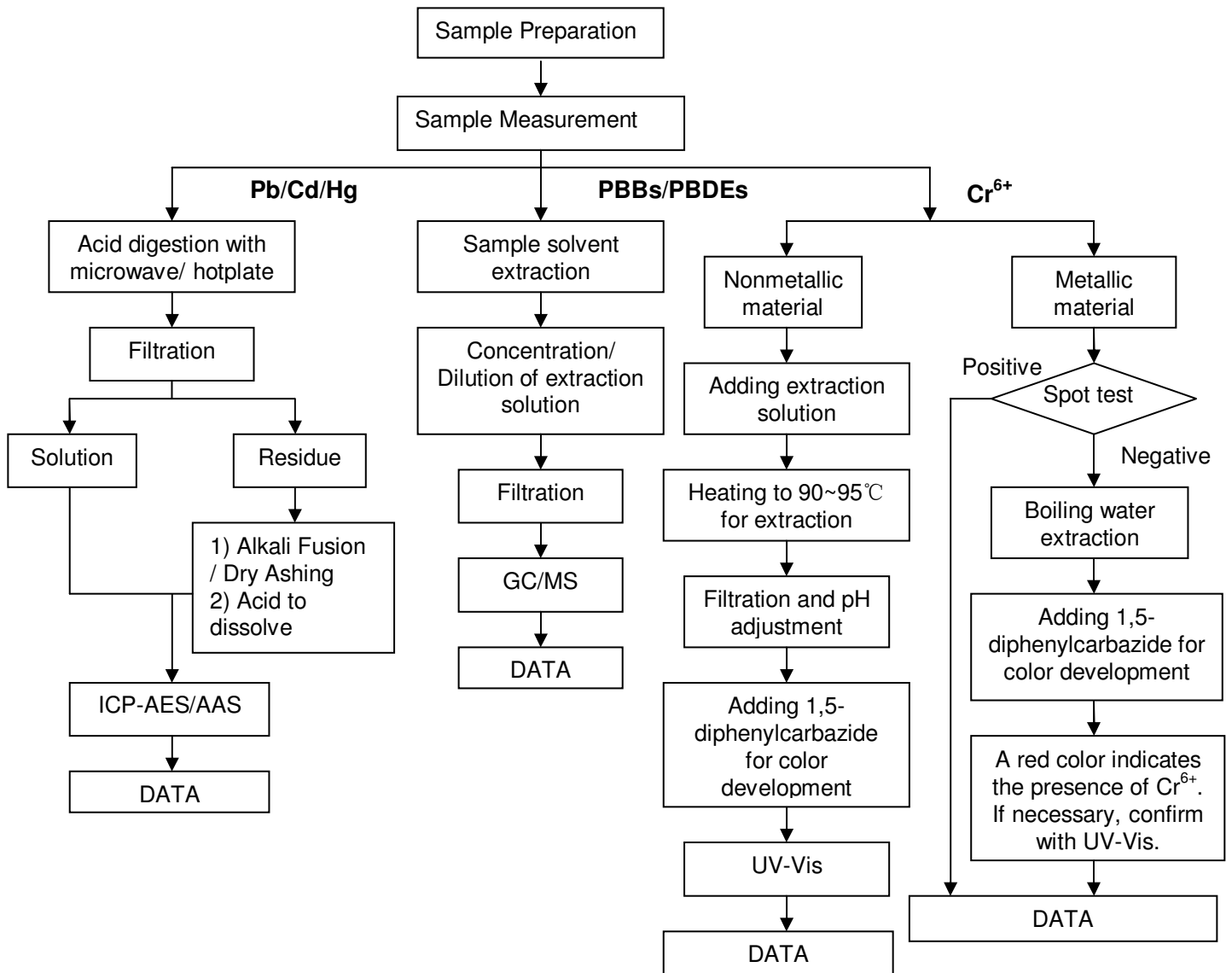
**Note:**

- (1) mg/kg = ppm
- (2) ND = Not Detected
- (3) MDL = Method Detection Limit
- (4) ##=The exemption of DecaBDE in polymeric application according 2005/717/EC was overruled by the European Court of Justice by its decision of 01.04.2008. Subsequently DecaBDE is included in the sum of PBDE after 01.07.2008.
- (5) “-” = Not Regulated
- (6) The maximum permissible limit is quoted from the document 2005/618/EC amending RoHS directive 2002/95/EC

This document is issued by the Company under its General Conditions of Service printed overleaf or available on request and accessible at [http://www.sgs.com/terms\\_and\\_conditions.htm](http://www.sgs.com/terms_and_conditions.htm). Attention is drawn to the limitation of liability, indemnification and jurisdiction issues defined therein. Any holder of this document is advised that information contained hereon reflects the Company's findings at the time of its intervention only and within the limits of Client's instructions, if any. The Company's sole responsibility is to its Client and this document does not generate parties to a transaction from exercising all their rights and obligations under the transaction documents. Any unauthorized alteration, forgery or falsification of the content or appearance of this document is unlawful and offenders may be prosecuted to the fullest extent of the law. Unless otherwise stated the results shown in this test report refer only to the sample(s) tested. This document cannot be reproduced except in full, without prior approval of the Company.

**ATTACHMENTS**

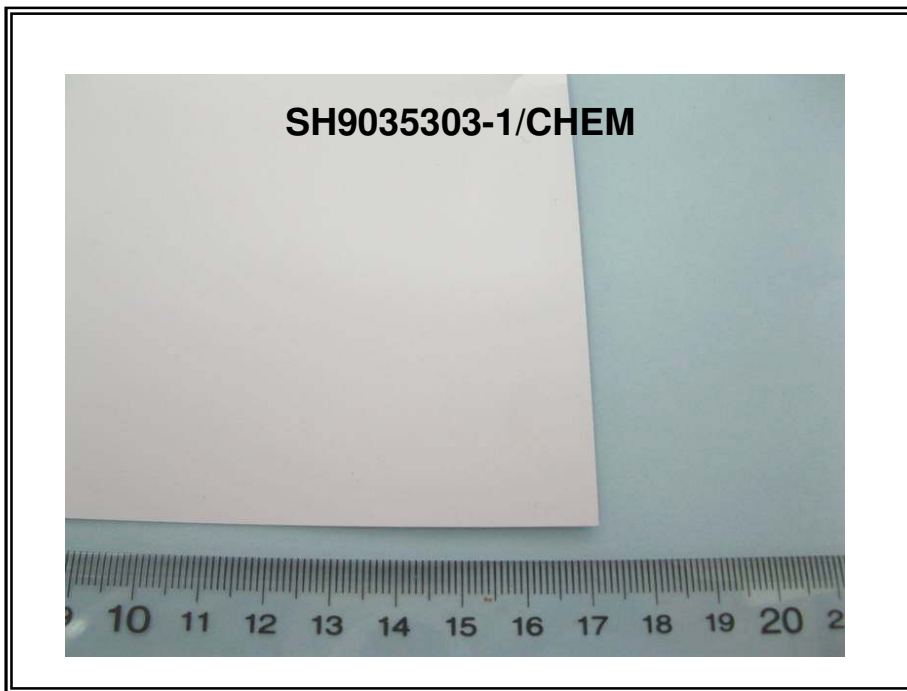
- 1) Name of the person who made measurement: Jeff Zhang/Chaven Lian/Frank Fang/Elim Lin
- 2) Name of the person in charge of measurement: Terry Wang/Phoebe Shen



This document is issued by the Company under its General Conditions of Service printed overleaf or available on request and accessible at [http://www.sgs.com/terms\\_and\\_conditions.htm](http://www.sgs.com/terms_and_conditions.htm). Attention is drawn to the limitation of liability, indemnification and jurisdiction issues defined therein. Any holder of this document is advised that information contained hereon reflects the findings at the time of its intervention only and within the limits of Client's instructions, if any. The Company's sole responsibility is to its Client and this document does not exonerate parties to a transaction from exercising all their rights and obligations under the transaction documents. Any unauthorized alteration, forgery or falsification of the content or appearance of this document is unlawful and offenders may be prosecuted to the fullest extent of the law. Unless otherwise stated the results shown in this test report refer only to the sample(s) tested. This document cannot be reproduced except in full, without prior approval of the Company.



Sample photo:



SGS authenticate the photo on original report only

\*\*\* End of Report \*\*\*

This document is issued by the Company under its General Conditions of Service printed overleaf or available on request and accessible at [http://www.sgs.com/terms\\_and\\_conditions.htm](http://www.sgs.com/terms_and_conditions.htm). Attention is drawn to the limitation of liability, indemnification and jurisdiction issues defined therein. Any holder of this document is advised that information contained hereon reflects the Company's findings at the time of its intervention only and within the limits of Client's instructions, if any. The Company's sole responsibility is to its Client and this document does not exonerate parties to a transaction from exercising all their rights and obligations under the transaction documents. Any unauthorized alteration, forgery or falsification of the content or appearance of this document is unlawful and offenders may be prosecuted to the fullest extent of the law. Unless otherwise stated the results shown in this test report refer only to the sample(s) tested. This document cannot be reproduced except in full, without prior approval of the Company.